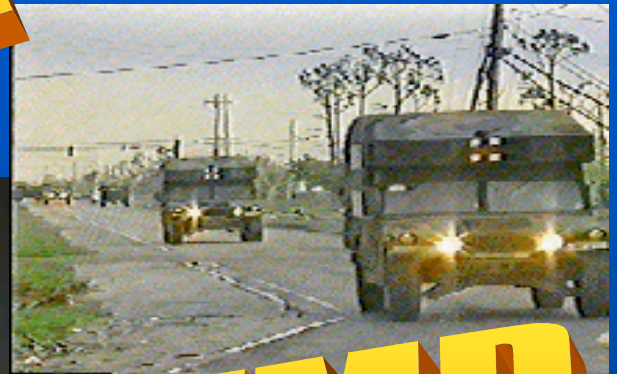




# Joint Regional Medical Planning Program



**MSCA**



**ICMOP**

**WMD**





# Joint Regional Medical Planning Program Mission

**As USJFCOM's regional medical planning liaisons, we provide expertise to:**

**-Educate and advise** Federal, State, and local health and medical partners, to include various military organizations on Department of Defense medical capabilities, response times, and operating requirements

**-Facilitate** the timely identification and appropriate use of DoD medical resources in support of wartime casualty reception plans and in response to domestic natural or man-made disasters

**...to help prevent undue human suffering and save lives.**

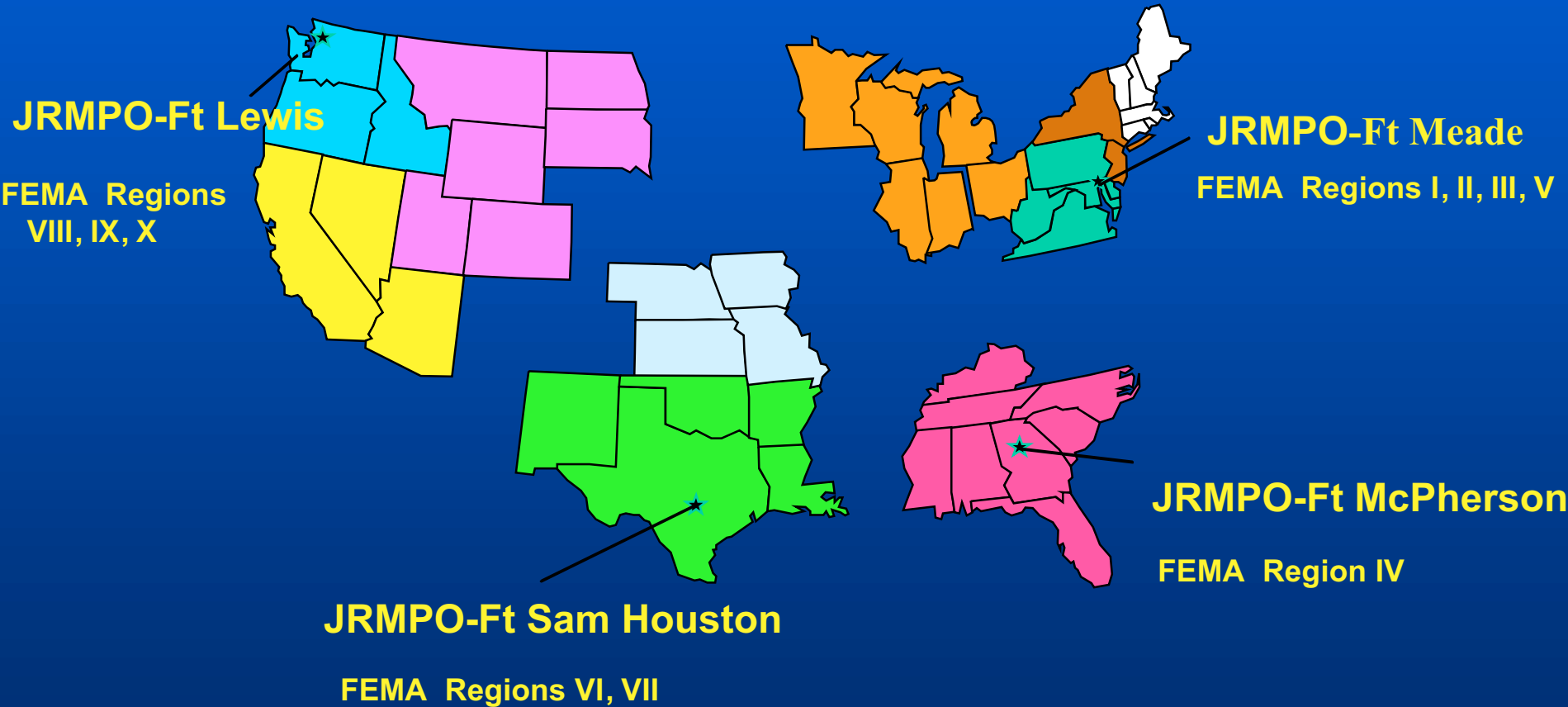


# Joint Regional Medical Planning Program

- DoD Medical connection to Federal response
- Liaison with DHHS through ESF- 8
- Initial filter of medical requests for assistance
- Passes recommendations through appropriate DoD command and control architecture



# Joint Regional Medical Planning Office Locations





# Organization

- **FORSCOM - Ft McPherson, GA** **1**  
(USN Medical Service Officer)
  - **JRMPO - Ft McPherson (Atlanta, GA)** **3**
  - **JRMPO - Ft George G Meade (FGGM, MD)** **3**
  - **JRMPO - Ft Sam Houston (San Antonio, TX)** **3**
  - **JRMPO - Ft Lewis (Tacoma, WA)** **3**
  - **Total Joint Medical Planners** **13**

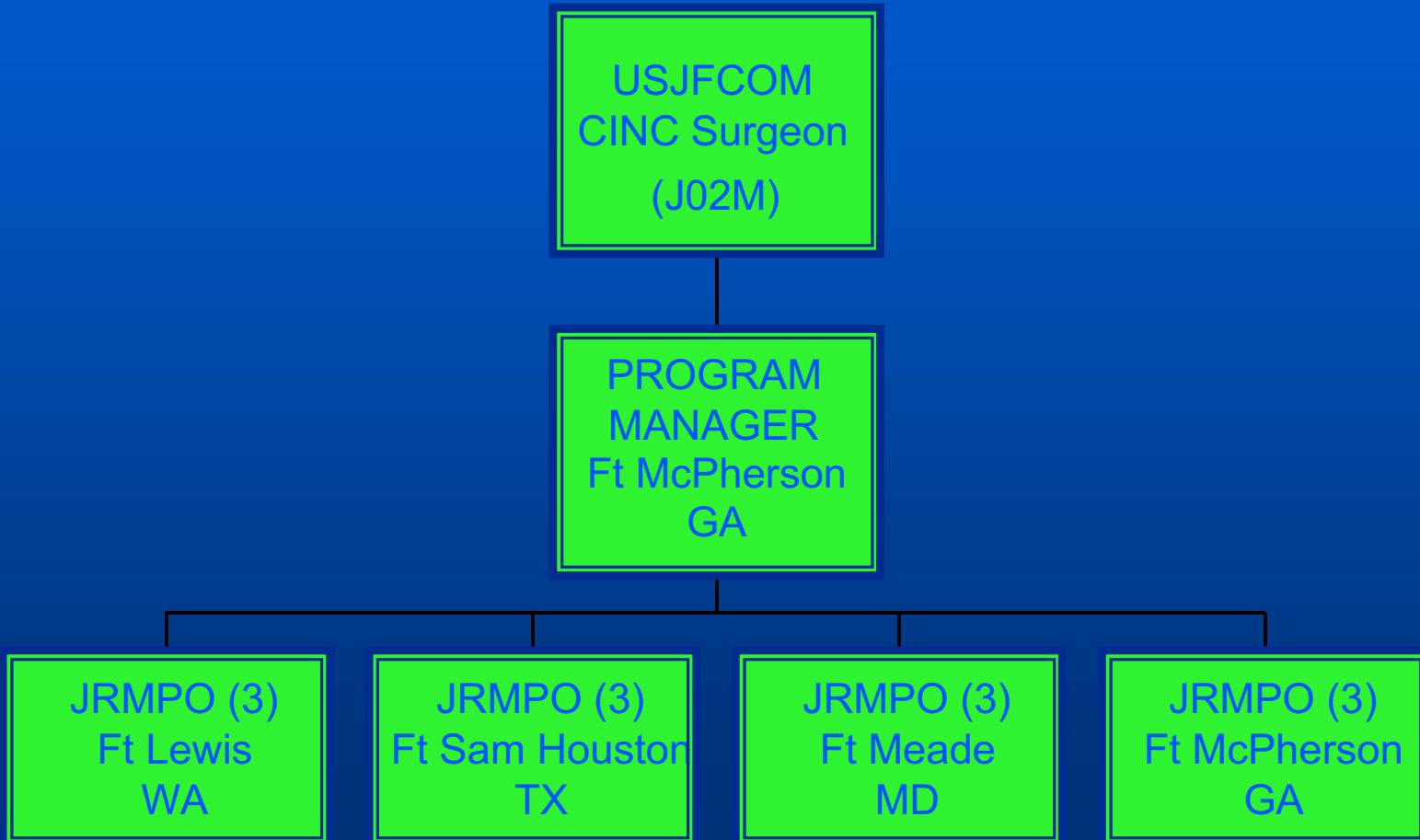


# Governing Directives

- **CINCUSJFCOM FUNCPLAN 2508-98 (Wartime):**
  - **Coordination with CINCUSTRANSCOM at ten CONUS reception hubs**
  - **Casualty reception from major theater war**
  - **Assist integration into National Disaster Medical System hospitals for casualty care**
- **DoDD 3025.1, USJFCOMINST 3020.1 (Peacetime):**
  - **Military Support to Civil Authorities**
  - **Support Lead Operational Authority through First and Fifth U.S. Armies**
- **Federal Response Plan**



# JRMP Organization (Peacetime)





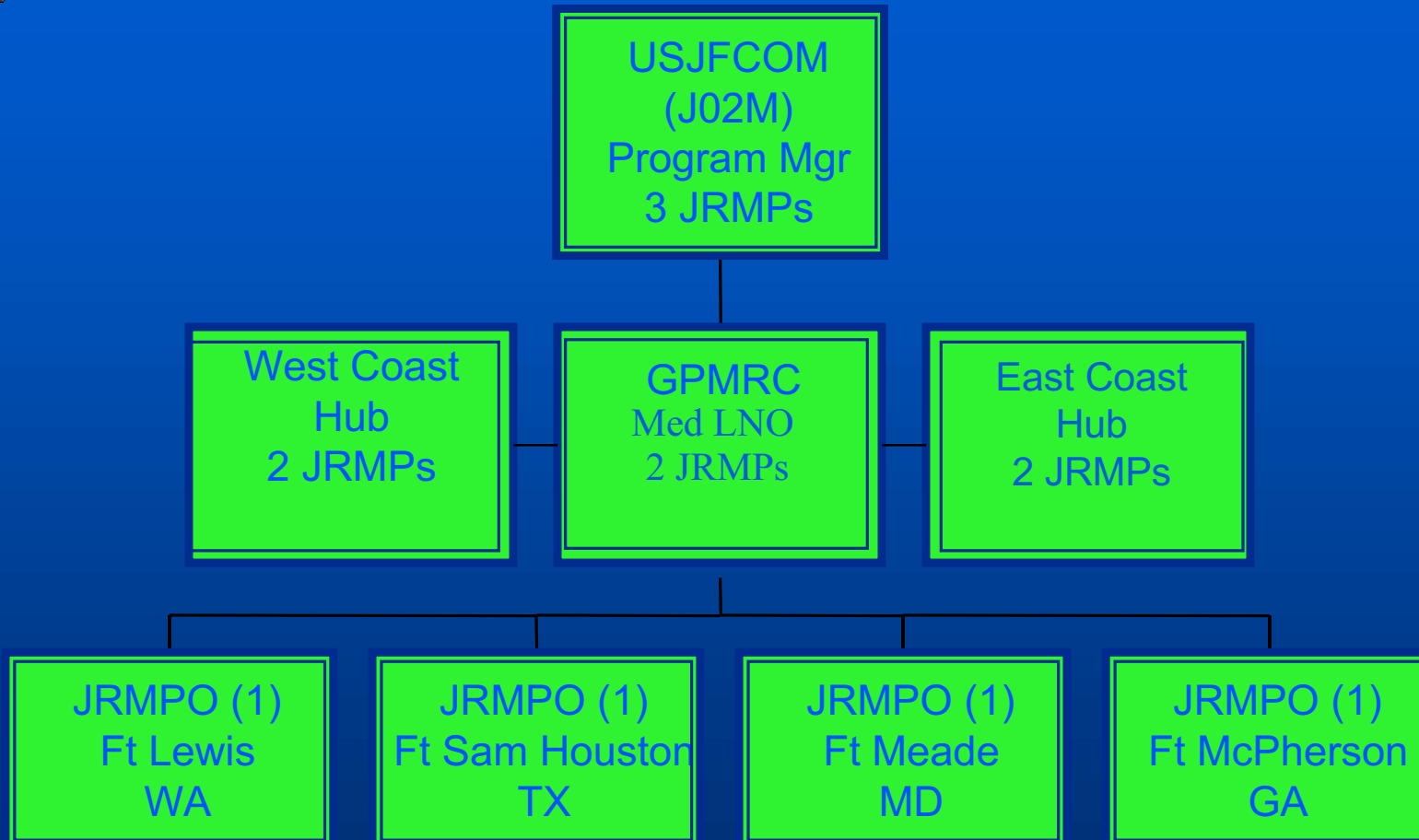
# Responsibilities

## (Domestic Planning and Response)

- Establish and maintain a liaison with governmental and healthcare agencies including DHHS, FEMA, DVA, FBI and DoD
- DoD medical connection to FEMA and DHHS in support of the FRP
- Educate and advise on DoD medical capabilities, response times, and operating requirements
- Provide interagency medical planning assistance to PHS, lead agencies, and regional planning agents upon request



# JRMP Organization (Wartime)





# Responsibilities (Wartime)

- **Assess regional medical capabilities**
- **Review medical mobilization plans**
- **Facilitate coordination with NDMS**
- **Coordinate medical mobilization priorities**



# JRMP Support

- 1995 Oklahoma City Bombing
- 1995 Hurricane Marilyn
- 1997 North Dakota Floods
- 1998 Hurricane Georges
- 1998 Hurricane Mitch
- 1999 Y2K Preparations
- 2000 Democratic and Republican Party Conventions
- 2001 Presidential Inauguration
- 2001 Hurricane Allison
- 2001 WV Floods
- 2001 World Trade Center/Pentagon Attacks
- 2002 Winter Olympics





**Questions???**



# Contact Numbers

## Office

Bldg. 4550 Llewellyn Ave. , Room 316  
Fort George G. Meade, MD 20755-7810  
COM 1-800-277-8925  
FAX (301) 677-5469

**MAJ Jeff Sloan, USA**

**(301) 677-3969**

**Cell (443) 994-2371**

**jeff.sloan@tsb.ftmeade.army.mil**

**Maj Brain Jefferson, USAF**

**COM (301) 677-4220**

**Cell (443) 994-3148**

**brain.jefferson@tsb.ftmeade.army.mil**

**LCDR Steve Pigman, USN**

**COM (301) 677-4662**

**Cell (443) 994-2921**

**pigmans@tsb.ftmeade.army.mil**