



GNYHA Workshop on Emergency Management: Training Objectives

Dario Gonzalez M.D., F.A.C.E.P.

Medical Director

Office Of Emergency Management



Exercise Training Program: Training Objectives

- ◆ Evaluate the Plan
 - Utilize objective indicators
- ◆ Preparation for real life events
- ◆ Develop disaster drill skills
- ◆ JCAHO requirement



Emergency Management Committee

- ◆ Function
- ◆ Authority
- ◆ Membership
- ◆ Work product
 - Standard Operating Procedures
 - Emergency Operations Procedures





Emergency Management Plan

- ◆ Hazards assessment approach

- ◆ Program development

- Mitigation

- Preparedness

- Response

- Recovery

- ◆ ICS/HEICS Plan

H E I C S

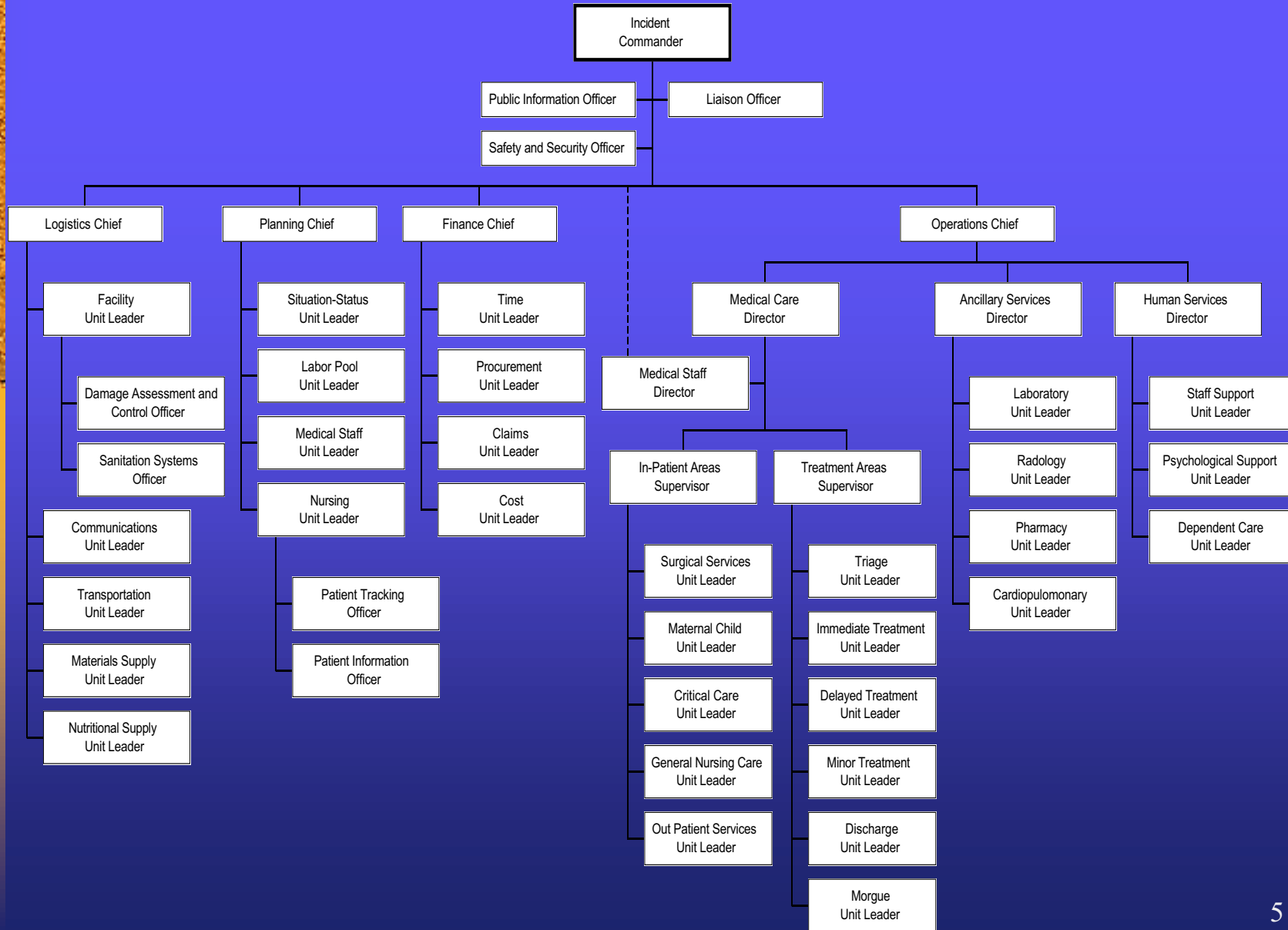
**THE HOSPITAL EMERGENCY INCIDENT
COMMAND SYSTEM**

San Mateo County Health Services Agency
Emergency Medical Services

Third Edition

Volume I

ICS/HEICS




Hazard Risk Vulnerability Analysis

◆ Purpose of the Analysis

- System assessment
- Probability and consequence assessment



Hazard-Vulnerability Assessment Tool



| | |
|-------------------|--------------------------------|
| Event | MCI, NBCI, Bomb Threat, etc. |
| Score | 0 (N/A); 1(Low); 2(Mod); 3(Hi) |
| Probability | Likelihood this will occur |
| Human Impact | Possible death or injury |
| Property Impact | Physical losses and damages |
| Business Impact | Interruption of services |
| Preparedness | Preplanning |
| Internal Response | Time, effectiveness, resources |
| External Response | Community/Mutual Aid |

Risk

RISK = PROBABILITY *SEVERITY

HAZARD-VULNERABILITY ASSESSMENT TOOL

| | |
|-------------------|--------------------------------|
| Event | MCI, NBCI, Bomb Threat, etc. |
| Score | 0 (N/A); 1(Low); 2(Mod); 3(Hi) |
| Probability | Likelihood this will occur |
| Human Impact | Possible death or injury |
| Property Impact | Physical losses and damages |
| Business Impact | Interruption of services |
| Preparedness | Preplanning |
| Internal Response | Time, effectiveness, resources |
| External Response | Community/Mutual Aid |
| Risk | Relative threat (0 – 100%) |



Community Exercise Program:

- ◆ Identify and define the four elements of a community exercise program:
 - Orientation seminars
 - Drills
 - Tabletop
 - Functional
 - Full-scale exercises
 - Education
 - Validation
 - The Risk Assessment Tool





Elements of Community Exercise Program:

- ◆ To be aware of the different types of disaster training and testing options:
 - Tabletop, functional, and full-scale exercises.
 - The overall goals of the Drill process.
- ◆ Annual updates to ensure.
 - General awareness.
 - Hazards awareness (community/institution).



Elements of Community Exercise Program:

- ◆ Overall institutional Disaster Plan goals and objectives.
- ◆ To prepare staff for real life events.





Teamwork Issues:

- ◆ Demonstrate elements of effective teamwork in exercise :
 - Development;
 - Conduct;
 - Evaluation;
 - Follow-up procedures.





Teamwork Issues:

- ◆ Drill elements are based on the development of an educated and organized cohesive staff.
- ◆ Not a testing process for staff members but rather a continuous institutional education and training program.
- ◆ Emergency preparedness requires:
 - Leadership;
 - Organization;
 - Education.





Progressive Exercise Program:

- ◆ Determine the most effective and feasible type of exercises for their community using the principles and practice of a progressive exercise program.
 - Senior staff should develop specific institutionally directed exercises.
 - The development of a progressive drill-training program with the ultimate goal of institutional disaster response and continuity of business.



Progressive Exercise Program:

- ◆ Progressive exercise training program does not rely on single, patient producing mass casualty exercise.
- ◆ To be aware of the exercise needs with respect to the testing goals.
 - Determine the most effective and feasible type of exercises for their community/facility.
 - What are you testing vs. what did you test?



Tabletop Exercises:

- ◆ To be aware of the characteristics and steps in developing, conducting, evaluating, and following-up on a tabletop exercise.
- ◆ The use of table focused tabletop exercises to review institutional disaster:
 - Preparedness plans;
 - Operational plans.





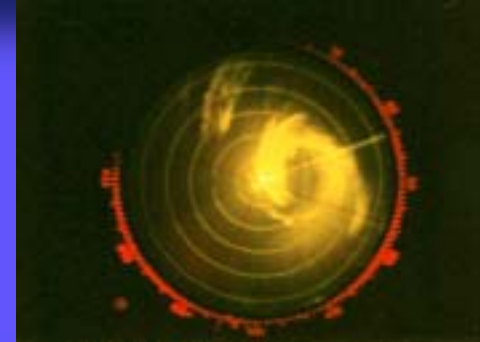
Tabletop Exercises:

- ◆ To be aware of a process in which system deficiencies can be:
 - Identified
 - Assessed
 - Corrected

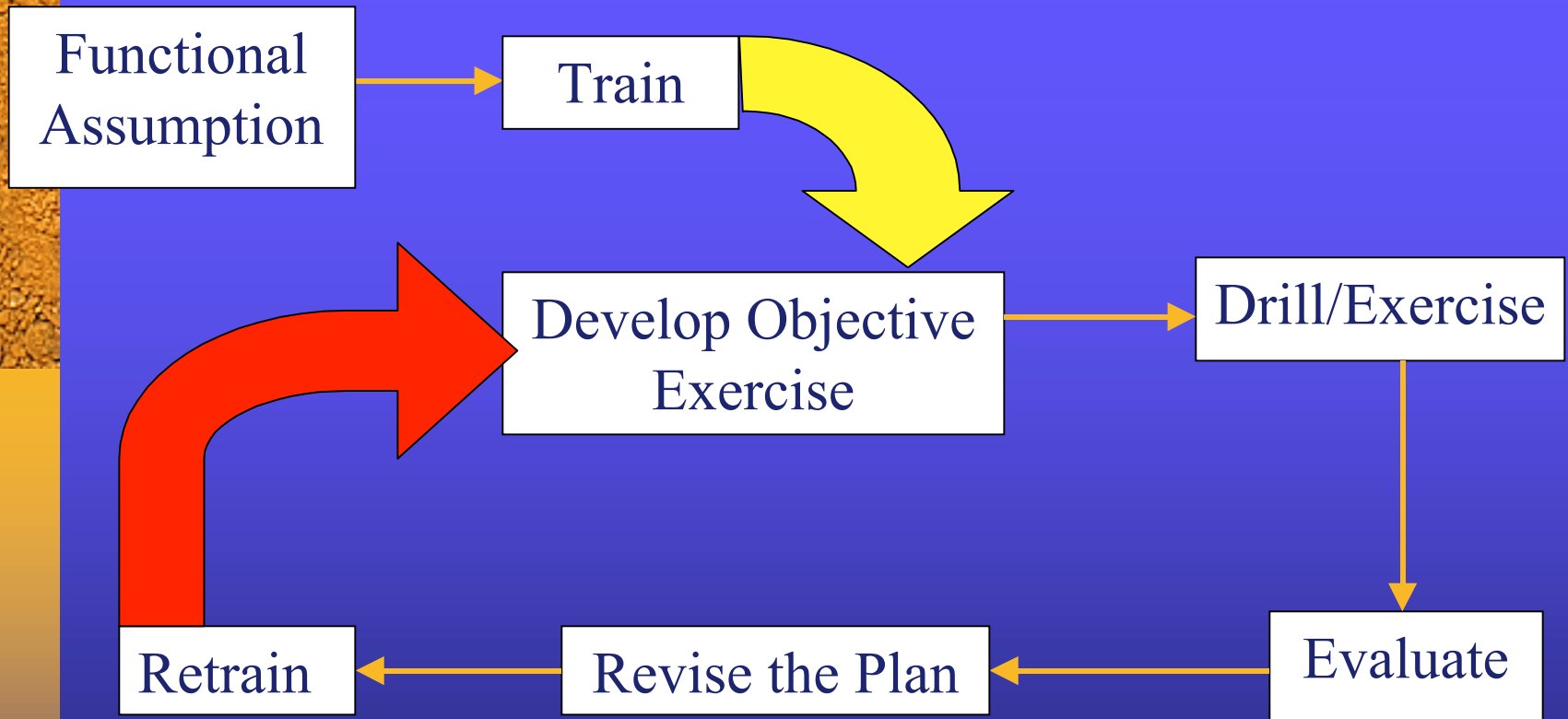


Functional Evaluation:

- ◆ To be aware of the characteristics and steps in developing, conducting, evaluating and following-up on a functional evaluation exercise.
 - The knowledge and usefulness of the testing-training-educational process.
 - To ensure that the testing process is evaluating the identified issue.



The Testing-Drill Cycle:



Needs Assessment:





Emergency Management Committee:

- ◆ Review the role of the Emergency Management Committee and its:
 - Authority,
 - Membership,
 - Work product of Standard Operating Procedures.
- ◆ Develop, test and evaluate emergency operational plans.