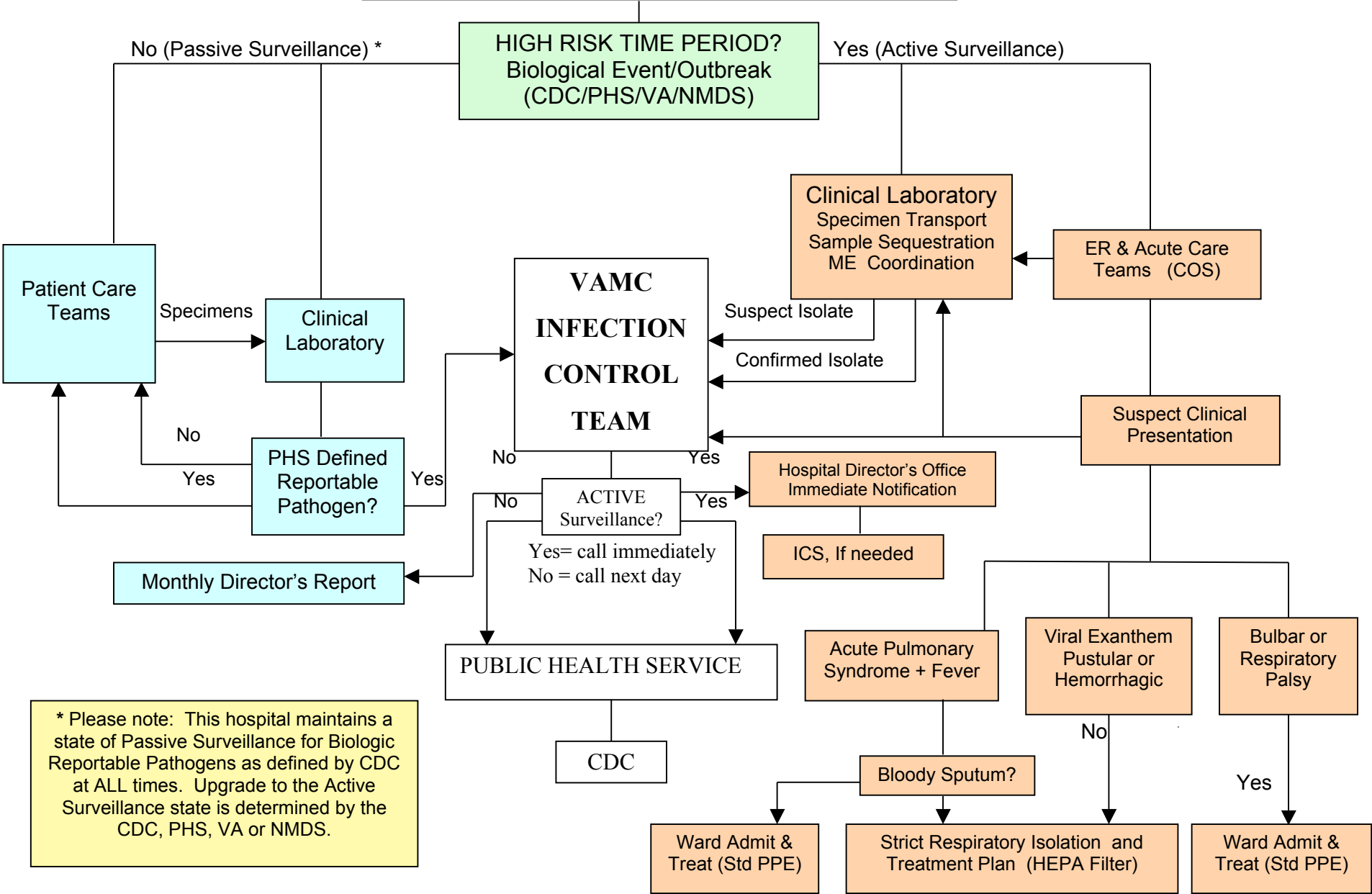


# SURVEILLANCE PLAN BIOLOGIC PATHOGENS / OUTBREAK "The Symptomatic Patient"



\* Please note: This hospital maintains a state of Passive Surveillance for Biologic Reportable Pathogens as defined by CDC at ALL times. Upgrade to the Active Surveillance state is determined by the CDC, PHS, VA or NMDS.